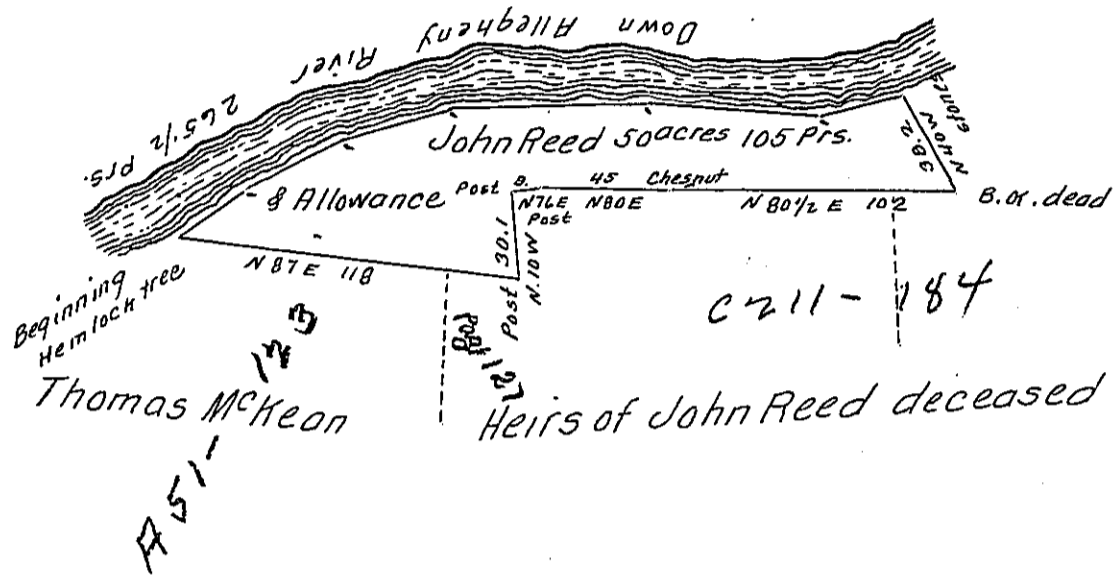


*Courses & Distances  
on Allegheny River*

S. 68 W 30 1/2  
 S. 84 W 61 1/2  
 S. 78 W 68  
 S. 64 W 38 1/2  
 S. 54 W 39  
 S. 44 W 28  
 -----  
 265 1/2



In pursuance of a Warrant granted to John Reed dated March 10<sup>th</sup> 1828 Surveyed on the 19<sup>th</sup> day following the above described tract of land containing fifty acres one hundred and five perches and the allowance proportioned at Six per Cent for roads & ca. Situate on Allegheny River in Allegheny township in the County of Westmoreland

Gabriel Hiester Esq. }  
 Surveyor General of Penna } S.L. Carpenter D.S.

IN TESTIMONY that the above is a copy of the original remaining on file in the Department of Internal Affairs of Pennsylvania, made conformably to an Act of Assembly approved the 16th day of February, 1833, I have hereunto set my Hand and caused the Seal of said Department to be affixed at Harrisburg, this twelfth day of September 1906.

*Loack J. Brown*  
 Secretary of Internal Affairs